

Land Use - 2005
Town of Newbury, New Hampshire

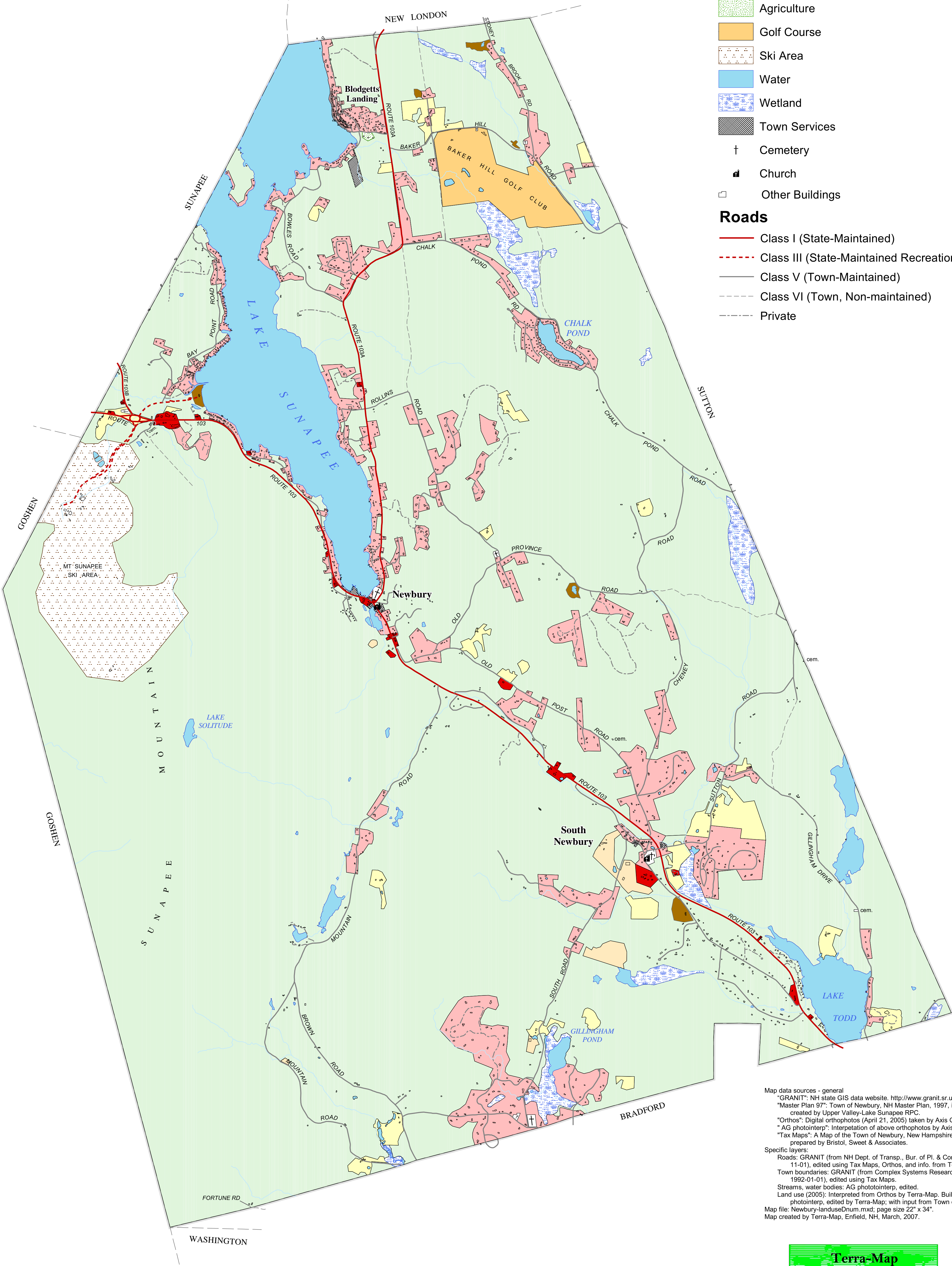
Legend

Land Use

- Commercial
- Residential
- Sand & Gravel Extraction
- Bare Ground
- Forest
- Grass/Pasture
- Agriculture
- Golf Course
- Ski Area
- Water
- Wetland
- Town Services
- Cemetery
- Church
- Other Buildings

Roads

- Class I (State-Maintained)
- Class III (State-Maintained Recreation Road)
- Class V (Town-Maintained)
- Class VI (Town, Non-maintained)
- Private



Map data sources - general
"GRANIT": NH state GIS data website. <http://www.granit.sr.unh.edu/>
"Master Plan 97": Town of Newbury, NH Master Plan, 1997, including maps created by Upper Valley-Lake Sunapee RPC.
"Orthos": Digital orthophotos (April 21, 2005) taken by Axis Geospatial LLC.
"AG photointerp": Interpretation of above orthophotos by Axis Geospatial LLC.
"Tax Maps": A Map of the Town of Newbury, New Hampshire, April 15, 2005, prepared by Bristol, Sweet & Associates.
Specific layers:
Roads: GRANIT (from NH Dept. of Transp., Bur. of Pl. & Com. Assist.; 2005-11-01), edited using Tax Maps, Orthos, and info. from Town.
Town boundaries: GRANIT (from Complex Systems Research Center, UNH; 1992-01-01), edited using Tax Maps.
Streams, water bodies: AG photointerp, edited.
Land use (2005): Interpreted from Orthos by Terra-Map. Buildings: AG photointerp, edited by Terra-Map; with input from Town of Newbury.
Map file: Newbury-landuseDrum.mxd; page size 22" x 34".
Map created by Terra-Map, Enfield, NH, March, 2007.

0 0.5 1 2 Miles

