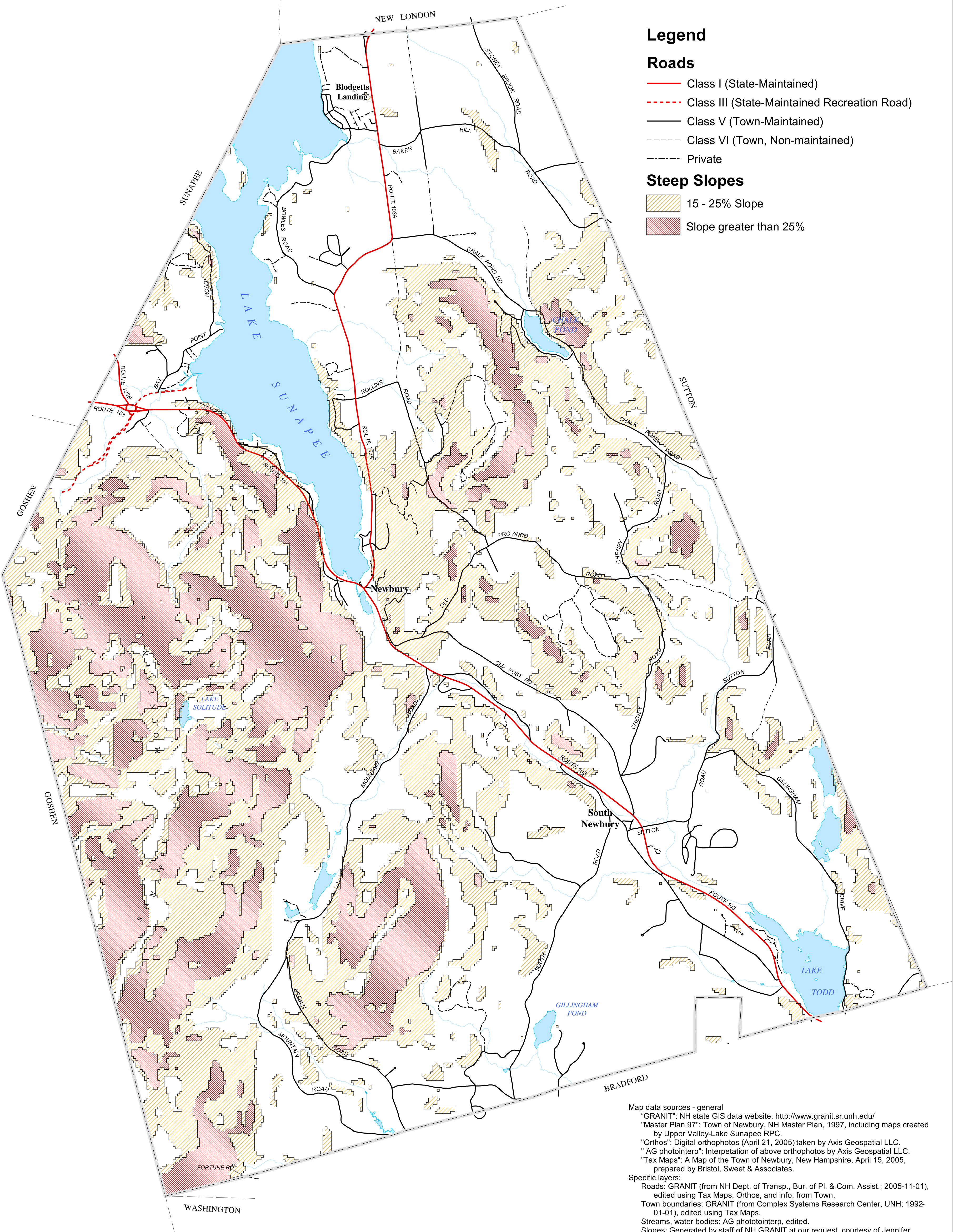


Steep Slopes

Town of Newbury, New Hampshire



Map data sources - general
"GRANIT": NH state GIS data website. <http://www.granit.sr.unh.edu/>
"Master Plan 97": Town of Newbury, NH Master Plan, 1997, including maps created by Upper Valley-Lake Sunapee RPC.
"Orthos": Digital orthophotos (April 21, 2005) taken by Axis Geospatial LLC.
"AG photointerp": Interpretation of above orthophotos by Axis Geospatial LLC.
"Tax Maps": A Map of the Town of Newbury, New Hampshire, April 15, 2005, prepared by Bristol, Sweet & Associates.

Specific layers:
Roads: GRANIT (from NH Dept. of Transp., Bur. of Pl. & Com. Assist.; 2005-11-01), edited using Tax Maps, Orthos, and info. from Town.
Town boundaries: GRANIT (from Complex Systems Research Center, UNH; 1992-01-01), edited using Tax Maps.
Streams, water bodies: AG photointerp, edited.
Slopes: Generated by staff of NH GRANIT at our request, courtesy of Jennifer Lingeman, GIS Database Manager, Institute for the Study of Earth, Oceans and Space, Complex Systems Research Center, University of New Hampshire.
Map file: Newbury-steepslopesDnum.mxd; page size 22" x 34".
Map created by Terra-Map, Enfield, NH, September, 2007.

0 0.5 1 2 Miles

