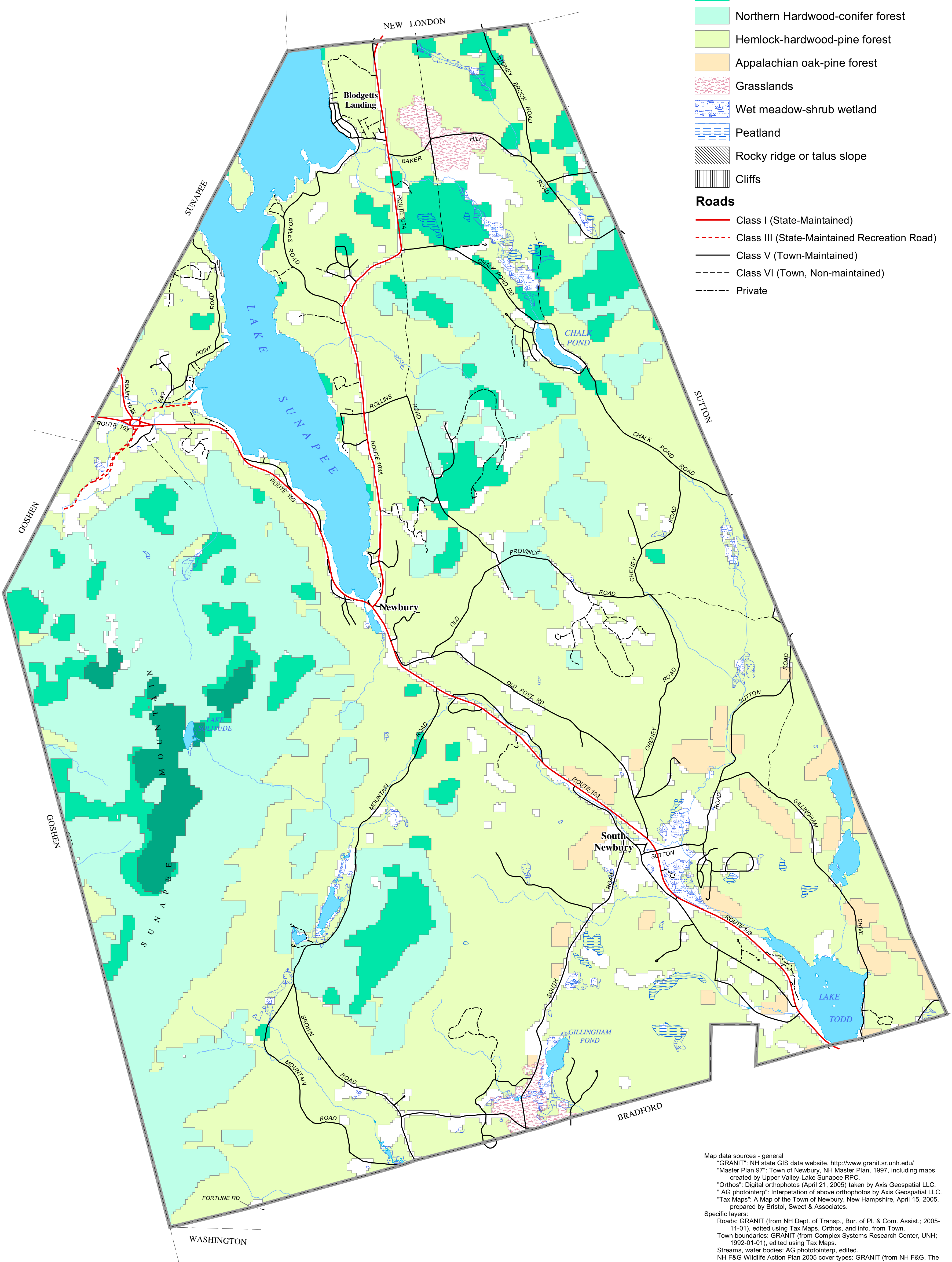


MAP VIII-5

NH Fish and Game Department
Wildlife Action Plan 2005
Cover Types
Town of Newbury, New Hampshire



Map data sources - general
"GRANIT": NH state GIS data website. <http://www.granit.sr.unh.edu/>
"Master Plan 97": Town of Newbury, NH Master Plan, 1997, including maps created by Upper Valley-Lake Sunapee RPC.
"Orthos": Digital orthophotos (April 21, 2005) taken by Axis Geospatial LLC.
"AG photointerp": Interpretation of above orthophotos by Axis Geospatial LLC.
"Tax Maps": A Map of the Town of Newbury, New Hampshire, April 15, 2005, prepared by Bristol, Sweet & Associates.
Specific layers:
Roads: GRANIT (from NH Dept. of Transp., Bur. of Pl. & Com. Assist.; 2005-11-01), edited using Tax Maps, Orthos, and info. from Town.
Town boundaries: GRANIT (from Complex Systems Research Center, UNH; 1992-01-01), edited using Tax Maps.
Streams, water bodies: AG photointerp, edited.
NH F&G Wildlife Action Plan 2005 cover types: GRANIT (from NH F&G, The Nature Conservancy-NH Chapter 2005, NH Natural Heritage Bureau; published 2005-10-01.)
Map file: Newbury-wildlifeDnum.mxd; page size 22" x 34".
Map created by Terra-Map, Enfield, NH, March, 2007.

00.512Miles

Terra-Map

P.O. Box 349

Enfield, NH 03748

(603) 632-1800

www.Terramap.com

Mapping the world One town at a time