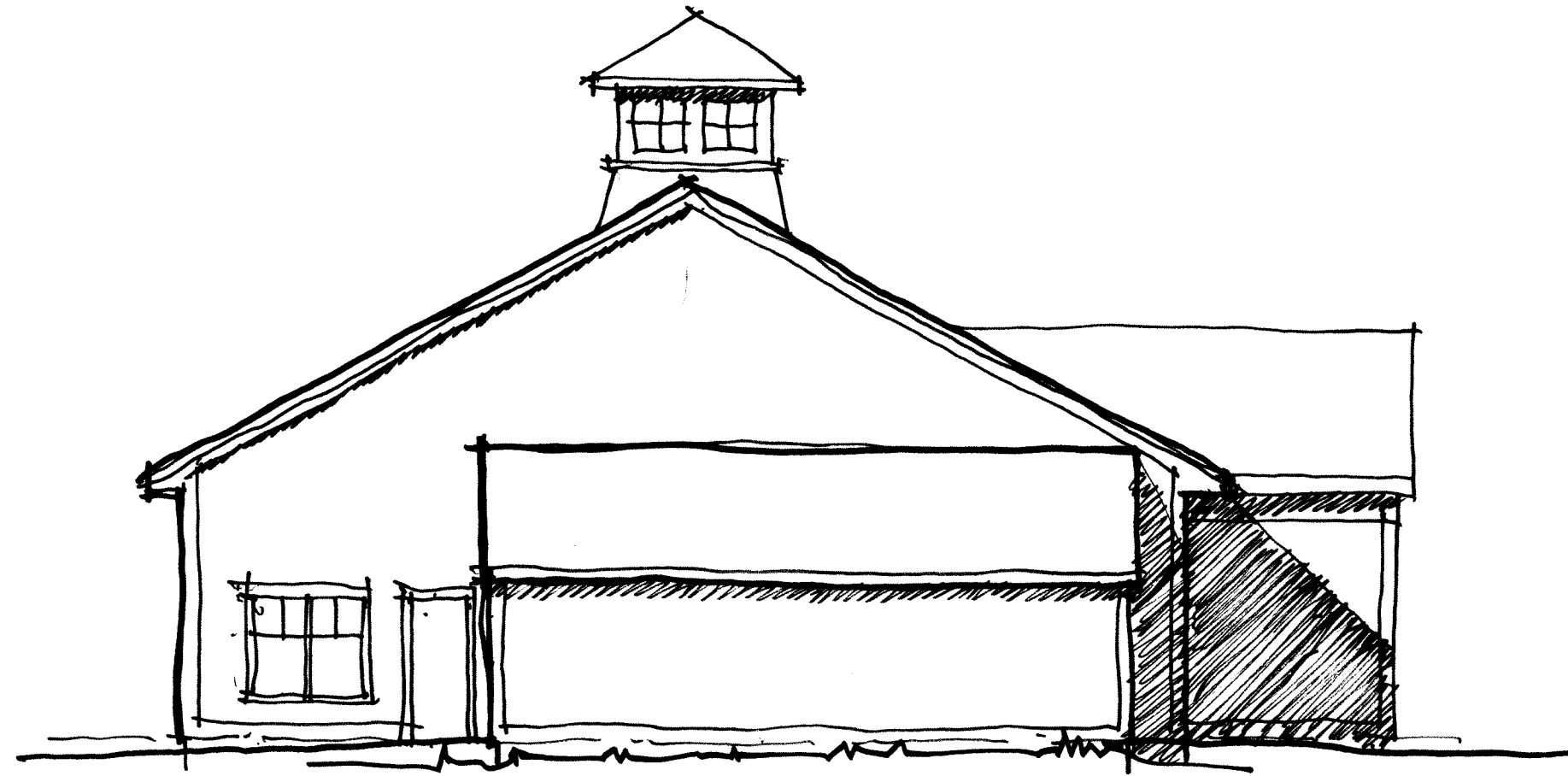
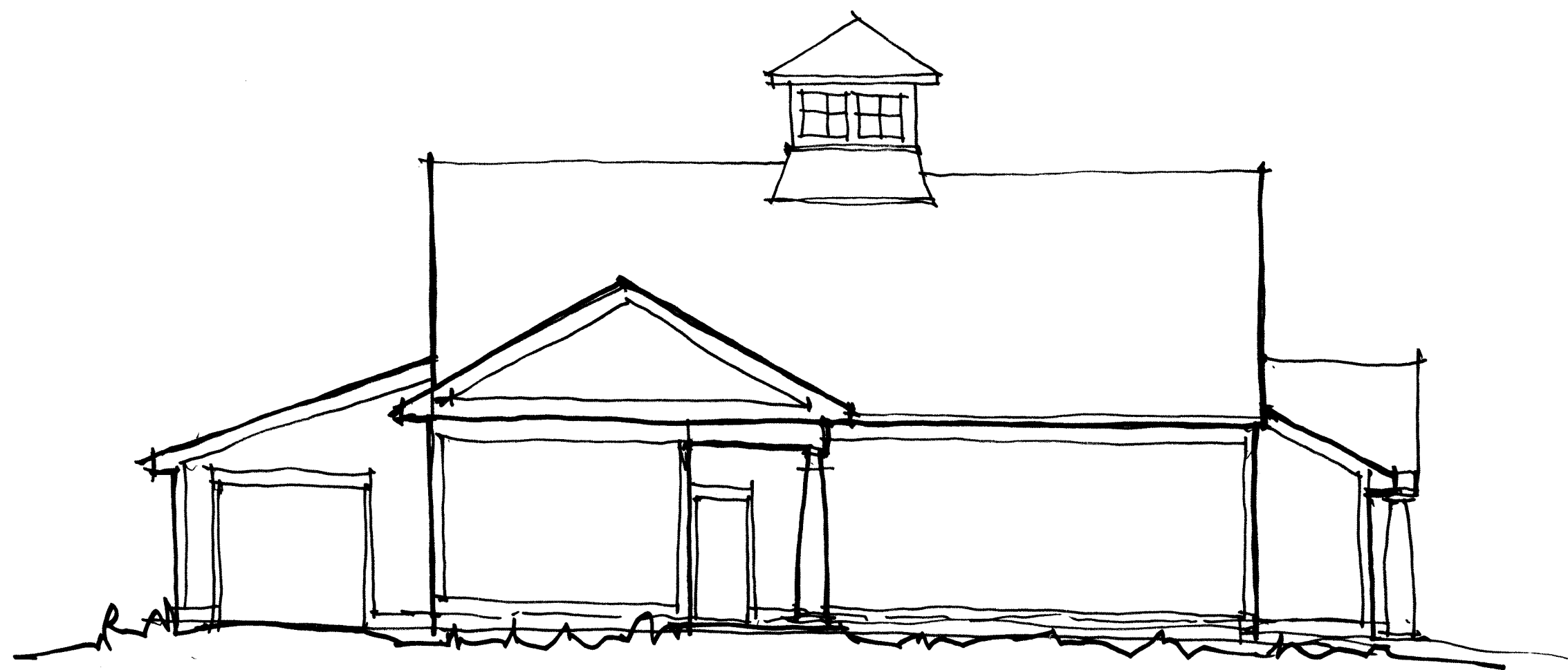


SIDE
1/8" = 1' 11-17-15



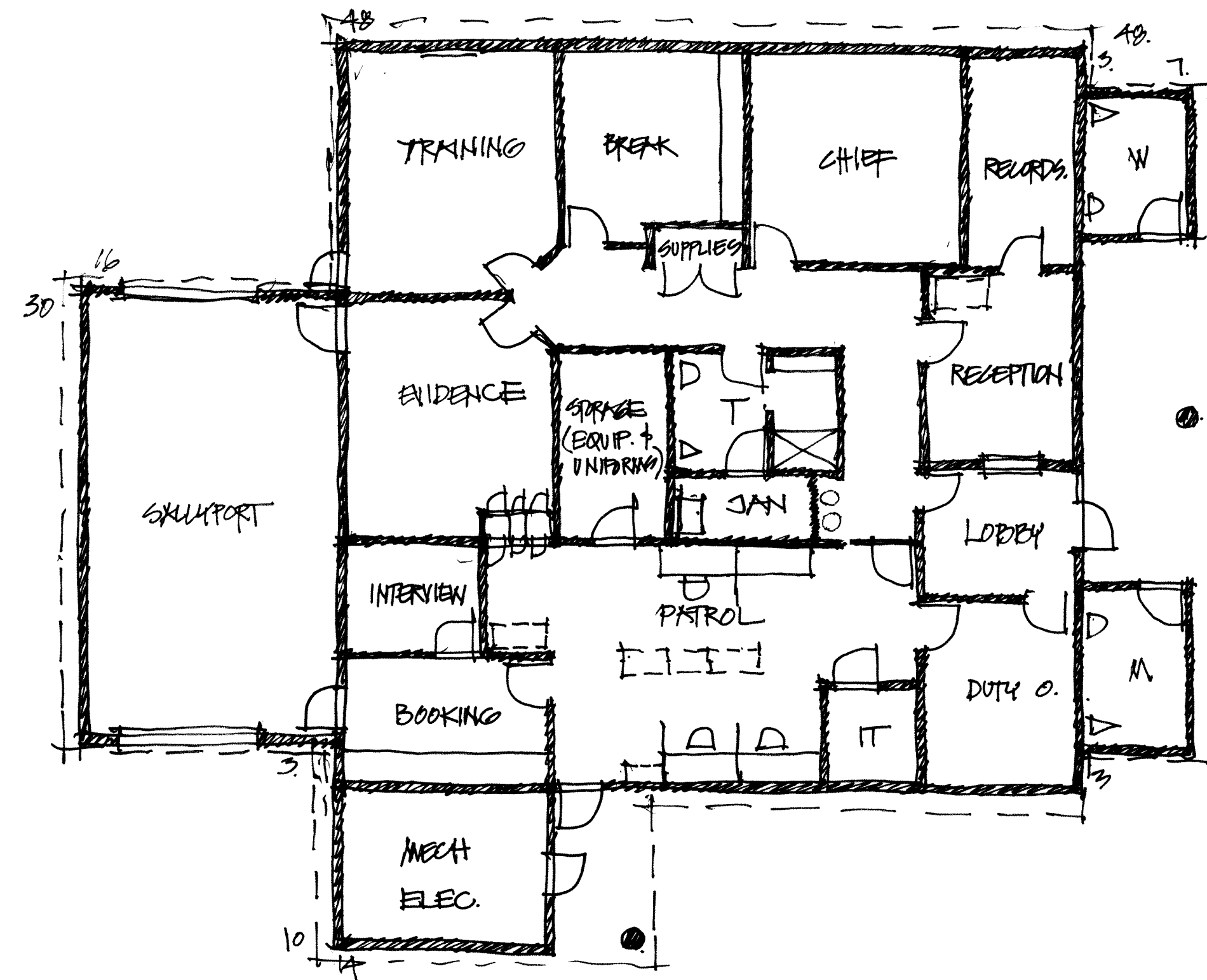
REAR
1/8" = 1' 11-17-15



SIDE
1/8" = 1' 11-17-15



FRONT
1/8" = 1' 11-17-15



POLICE PLAN
1/8" = 1' 11-17-15
+TS 154
3078

I:\Volumes\ActiveProjects\Newbury Town Center-2015033\Newbury-Police Building\Newbury Town Center-POLICE-A19.pn Tuesday, November 17, 2015

NEWBURY TOWN CENTER
- POLICE -
NH Route 103
Newbury, New Hampshire

DENNIS MIRE'S, P.A.
THE ARCHITECTS
697 Union Street, Manchester, NH
603-625-4548 FAX 603-625-1067

The material contained in these drawings and the design is the property of Dennis B. Mires, P.A. Permission and use is granted only for the project and site identified in the title block and no part of the drawings may be reproduced or transmitted in any form or by any means, electronic or mechanical, including photocopying, recording, or by any information storage and retrieval system, without the prior written consent of Dennis B. Mires, P.A.

POLICE - 1

revisions:

date:
November 17, 2015
proj. no.: 2015-033

A-1